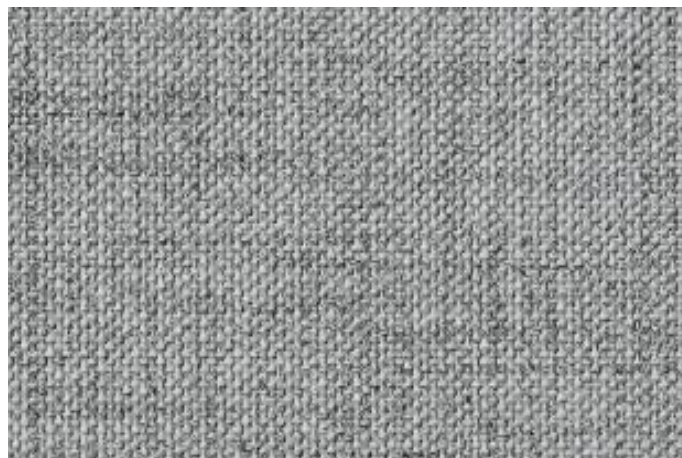




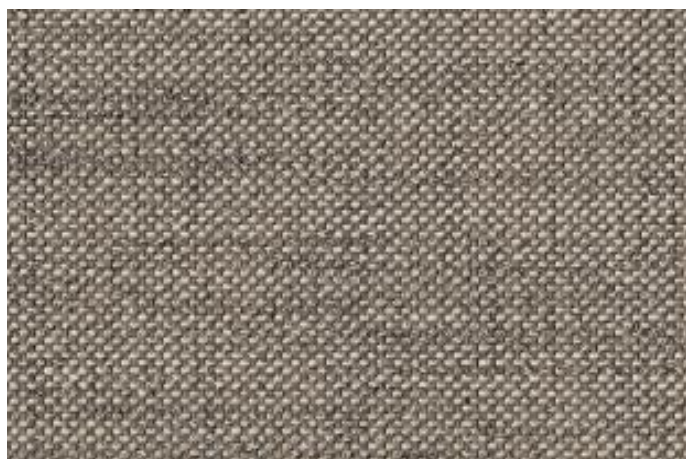
FR Newlife Earth 5N2775



FR Newlife Earth 5N2775 - 11



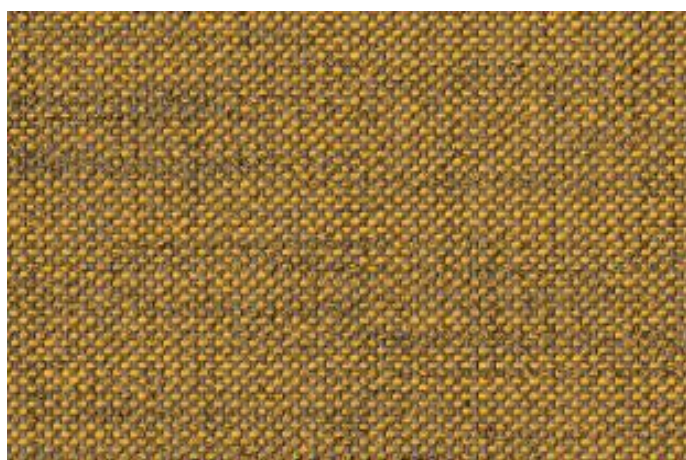
FR Newlife Earth 5N2775 - 12



FR Newlife Earth 5N2775 - 13



FR Newlife Earth 5N2775 - 14



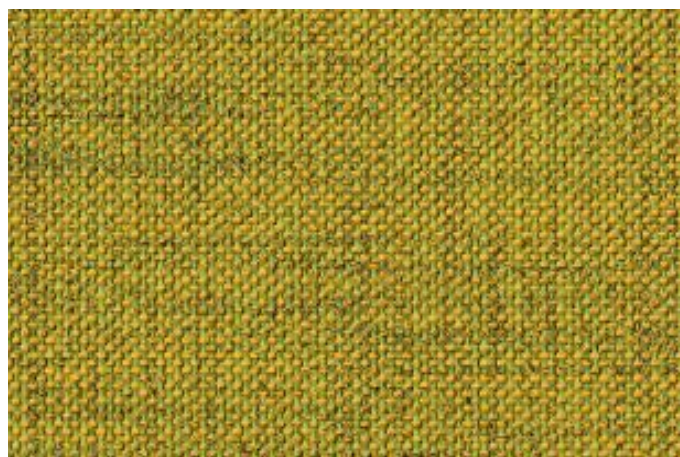
FR Newlife Earth 5N2775 - 20



FR Newlife Earth 5N2775 - 21



FR Newlife Earth 5N2775 - 22



FR Newlife Earth 5N2775 - 23



FR Newlife Earth 5N2775 - 25



FR Newlife Earth 5N2775 - 26



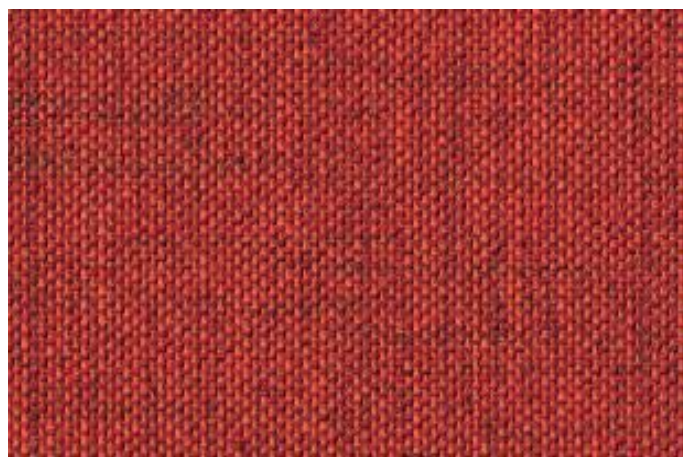
FR Newlife Earth 5N2775 - 30



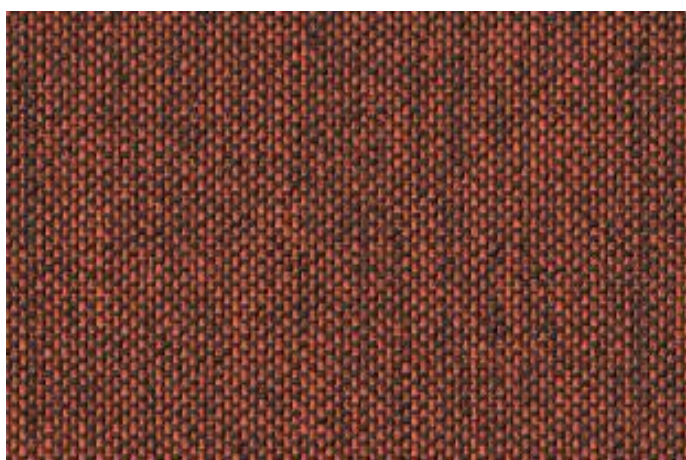
FR Newlife Earth 5N2775 - 31



FR Newlife Earth 5N2775 - 32



FR Newlife Earth 5N2775 - 33



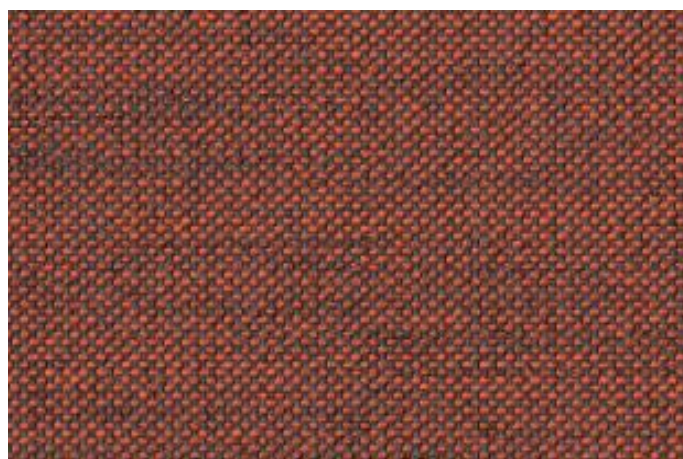
FR Newlife Earth 5N2775 - 34



FR Newlife Earth 5N2775 - 35



FR Newlife Earth 5N2775 - 36



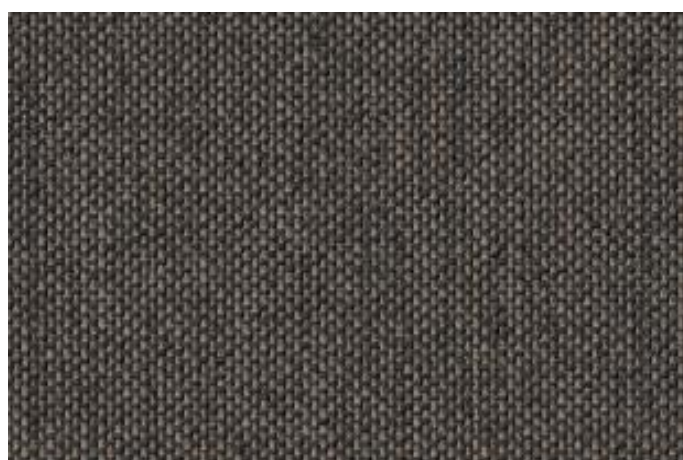
FR Newlife Earth 5N2775 - 37



FR Newlife Earth 5N2775 - 38



FR Newlife Earth 5N2775 - 39



FR Newlife Earth 5N2775 - 40



FR Newlife Earth 5N2775 - 41



FR Newlife Earth 5N2775 - 42



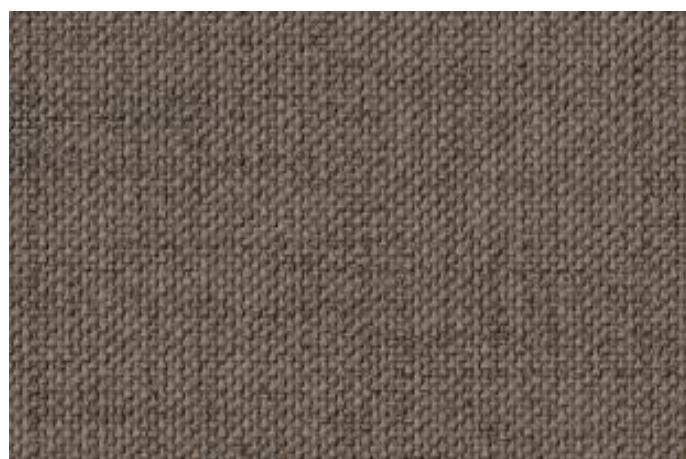
FR Newlife Earth 5N2775 - 43



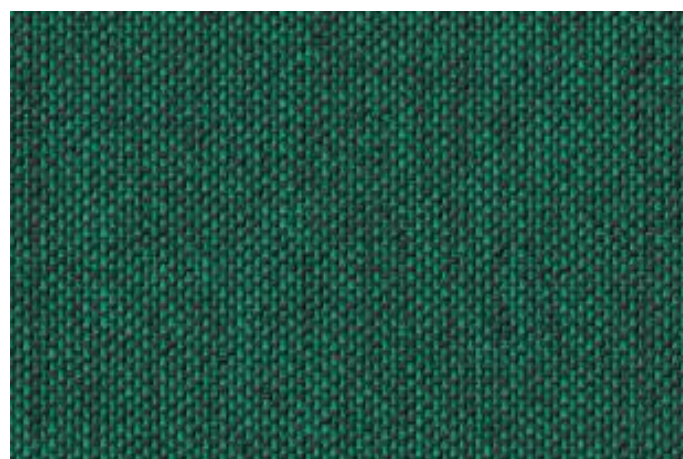
FR Newlife Earth 5N2775 - 44



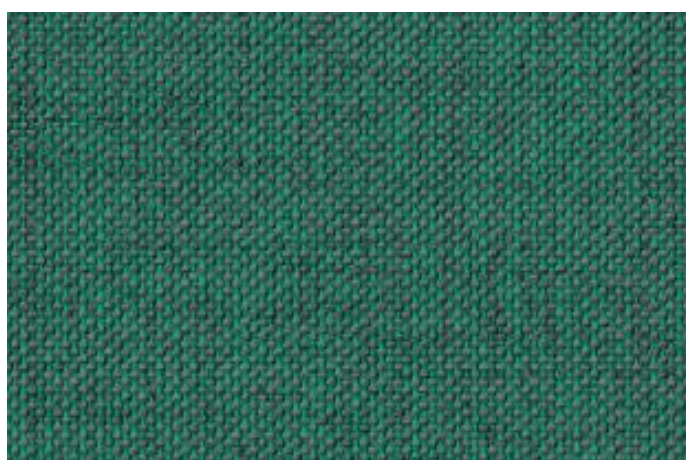
FR Newlife Earth 5N2775 - 45



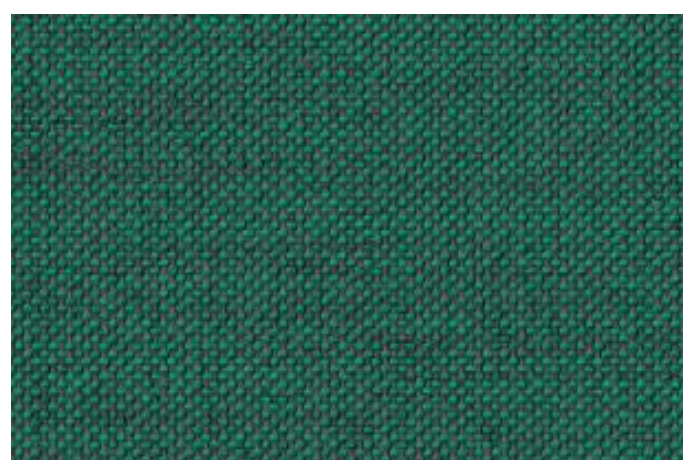
FR Newlife Earth 5N2775 - 46



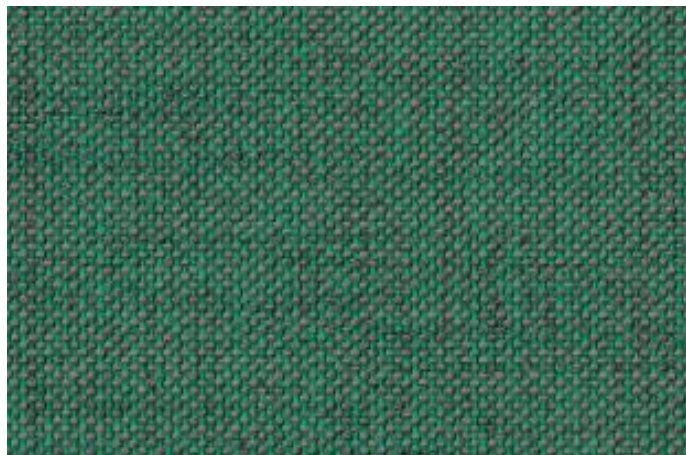
FR Newlife Earth 5N2775 - 50



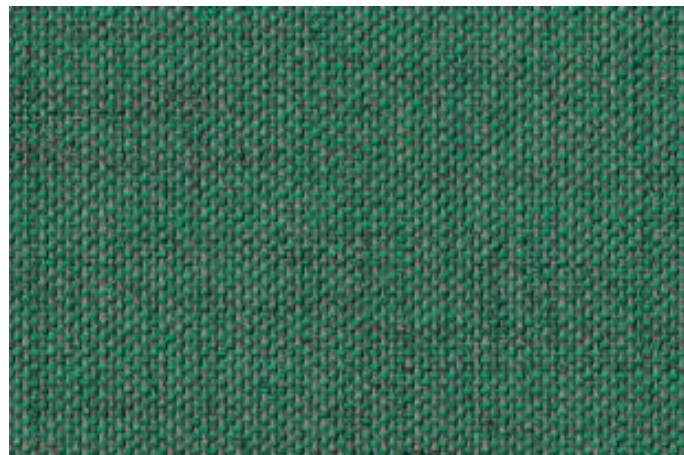
FR Newlife Earth 5N2775 - 51



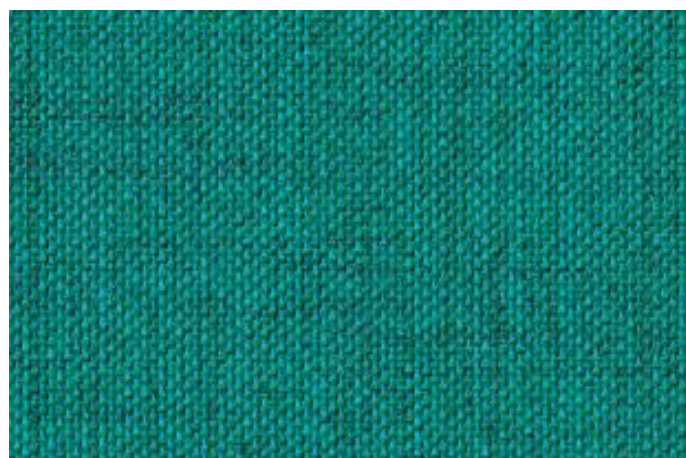
FR Newlife Earth 5N2775 - 52



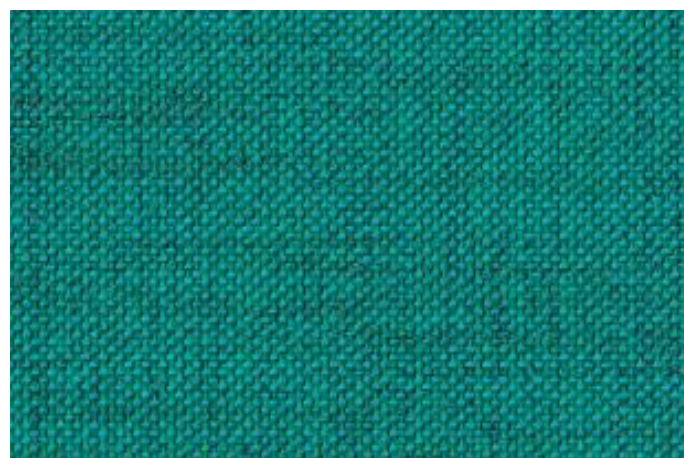
FR Newlife Earth 5N2775 - 53



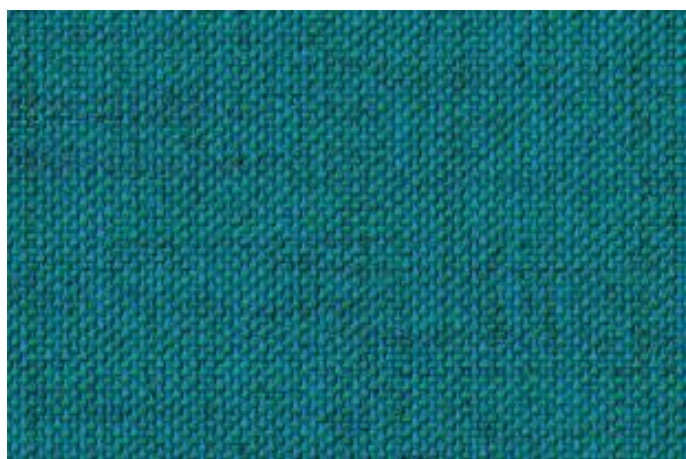
FR Newlife Earth 5N2775 - 54



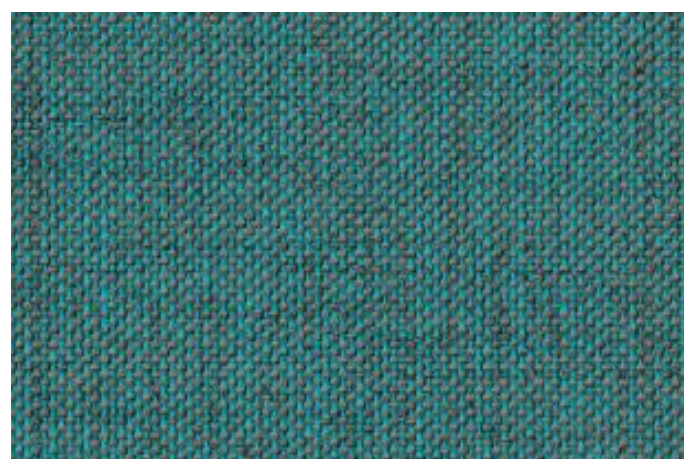
FR Newlife Earth 5N2775 - 55



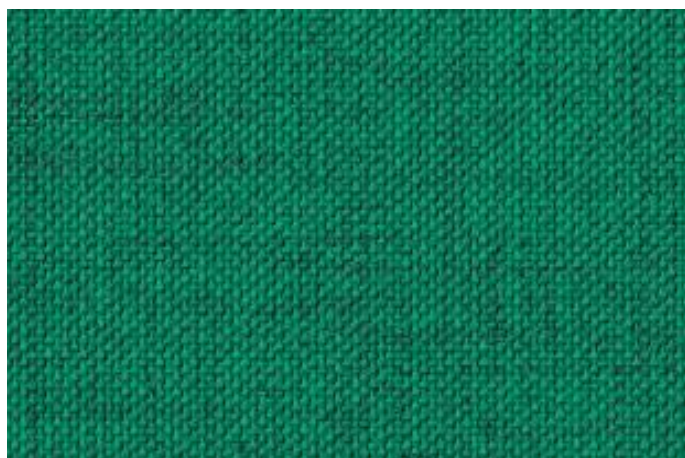
FR Newlife Earth 5N2775 - 56



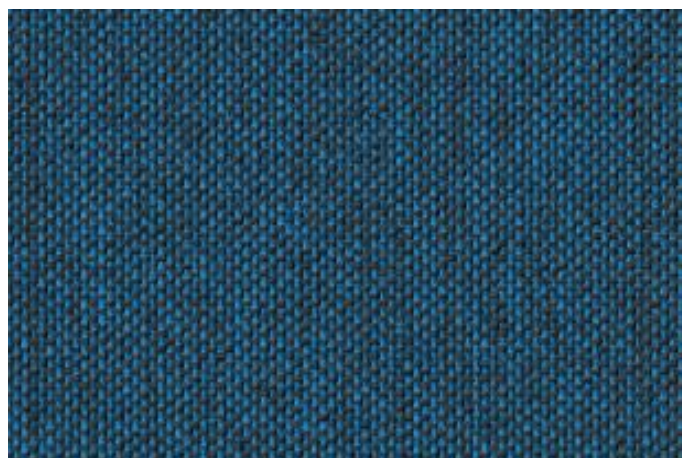
FR Newlife Earth 5N2775 - 57



FR Newlife Earth 5N2775 - 58



FR Newlife Earth 5N2775 - 59



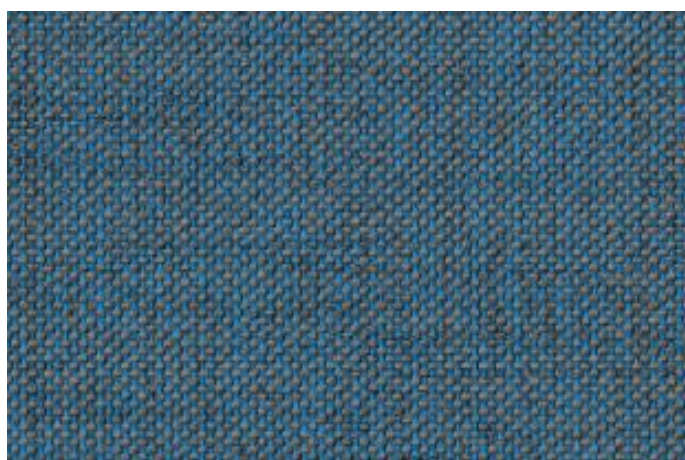
FR Newlife Earth 5N2775 - 60



FR Newlife Earth 5N2775 - 61



FR Newlife Earth 5N2775 - 62



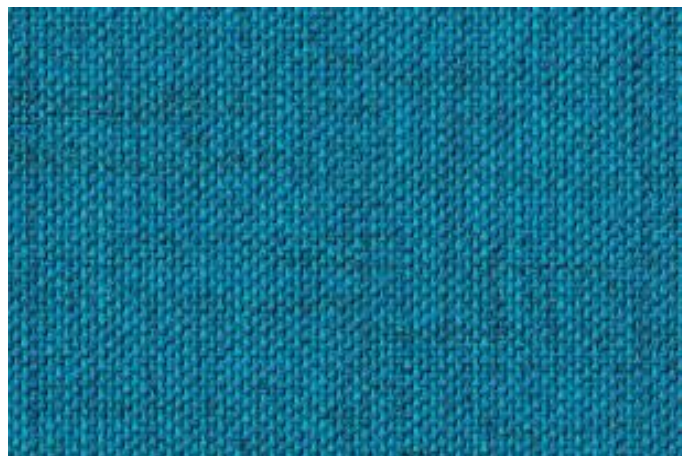
FR Newlife Earth 5N2775 - 63



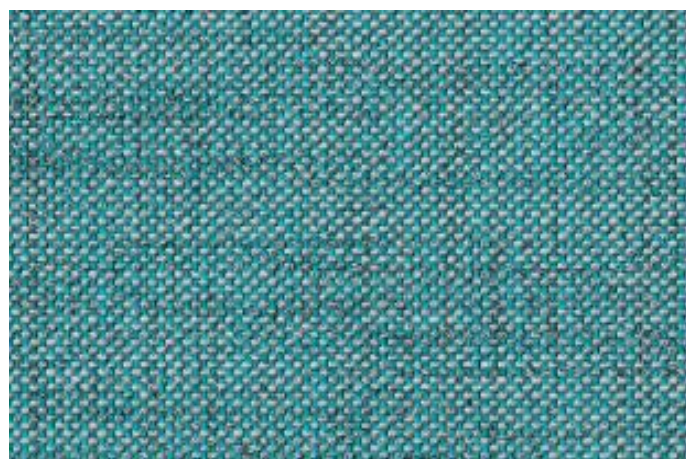
FR Newlife Earth 5N2775 - 64



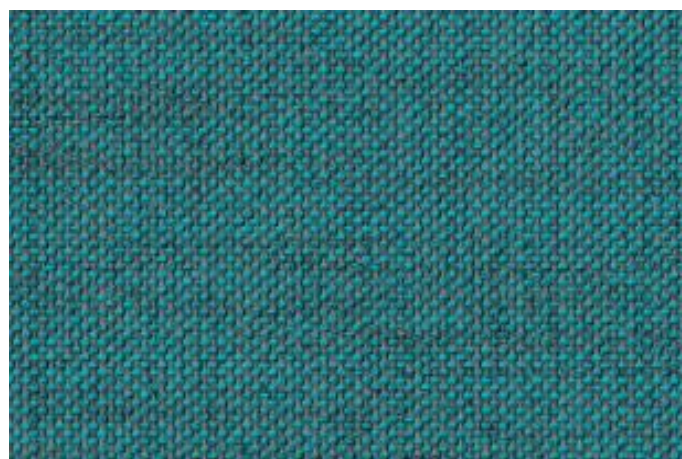
FR Newlife Earth 5N2775 - 65



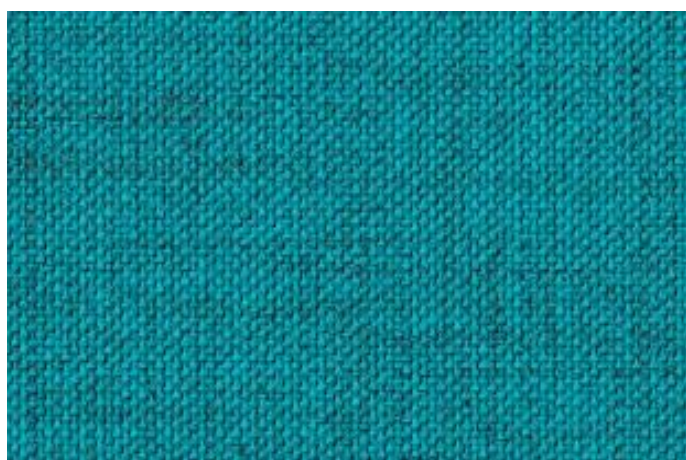
FR Newlife Earth 5N2775 - 66



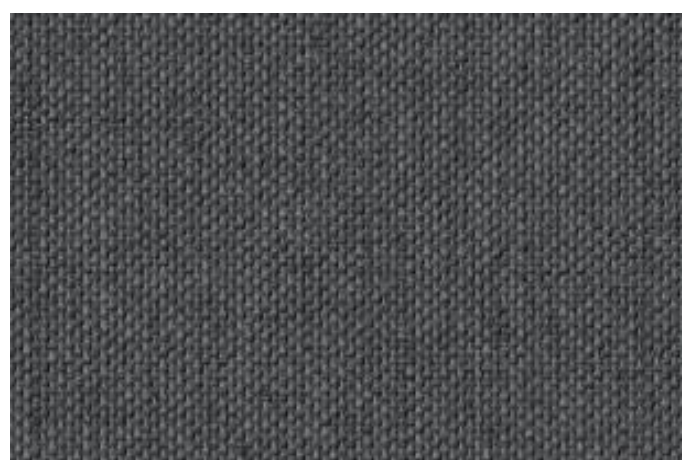
FR Newlife Earth 5N2775 - 67



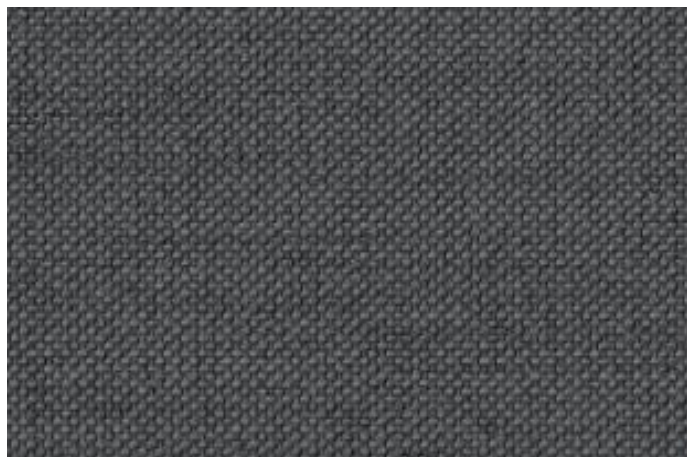
FR Newlife Earth 5N2775 - 68



FR Newlife Earth 5N2775 - 69



FR Newlife Earth 5N2775 - 70



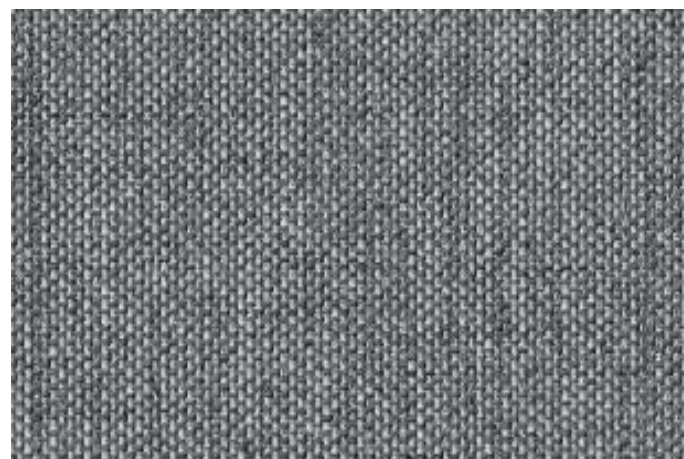
FR Newlife Earth 5N2775 - 71



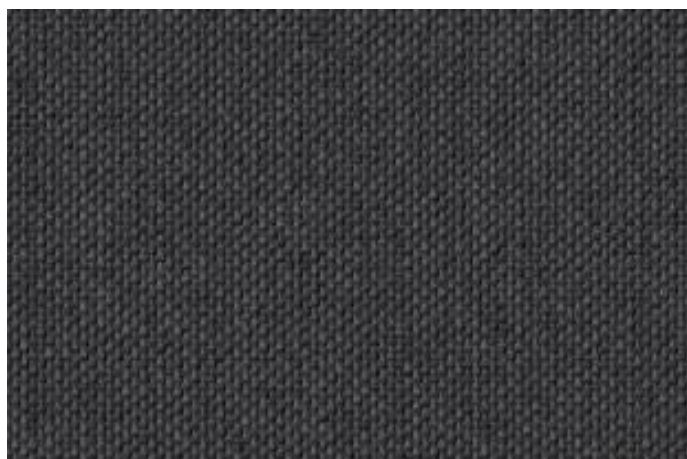
FR Newlife Earth 5N2775 - 72



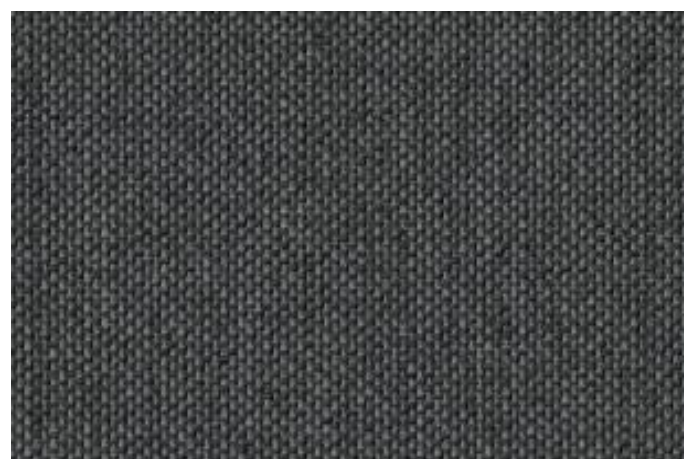
FR Newlife Earth 5N2775 - 73



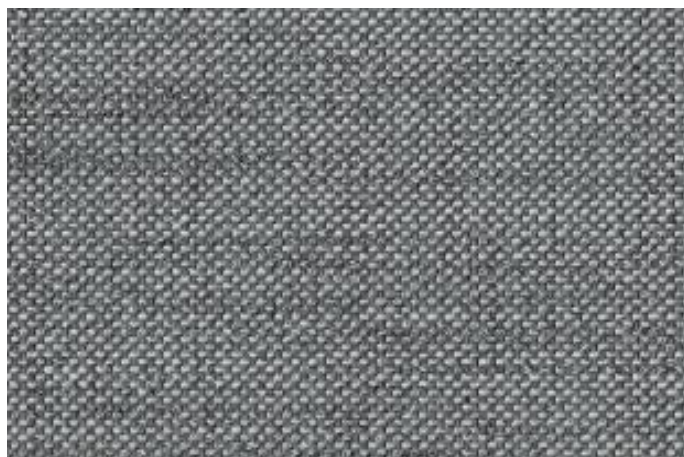
FR Newlife Earth 5N2775 - 74



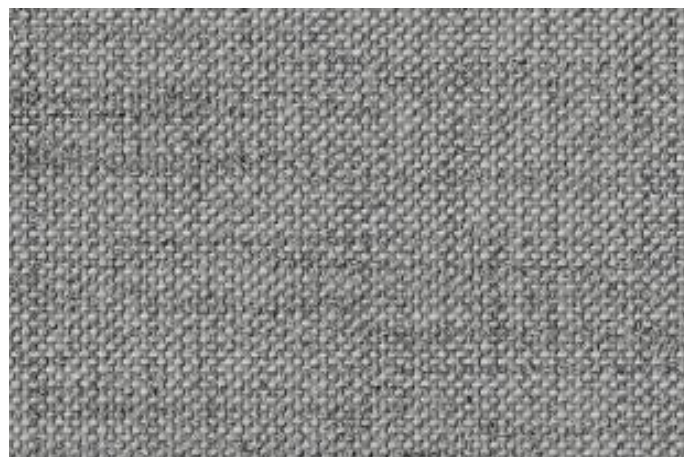
FR Newlife Earth 5N2775 - 75



FR Newlife Earth 5N2775 - 76



FR Newlife Earth 5N2775 - 77



FR Newlife Earth 5N2775 - 78



FR Newlife Earth 5N2775 - 79



FR Newlife Earth 5N2775 - 90



FR Newlife Earth 5N2775 - 91



FR Newlife Earth 5N2775 - 92



FR Newlife Earth 5N2775 - 93



FR Newlife Earth 5N2775 - 110



FR Newlife Earth 5N2775 - 111



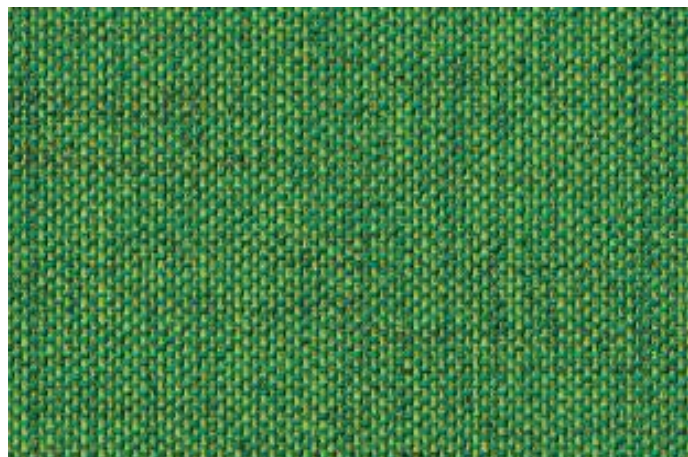
FR Newlife Earth 5N2775 - 112



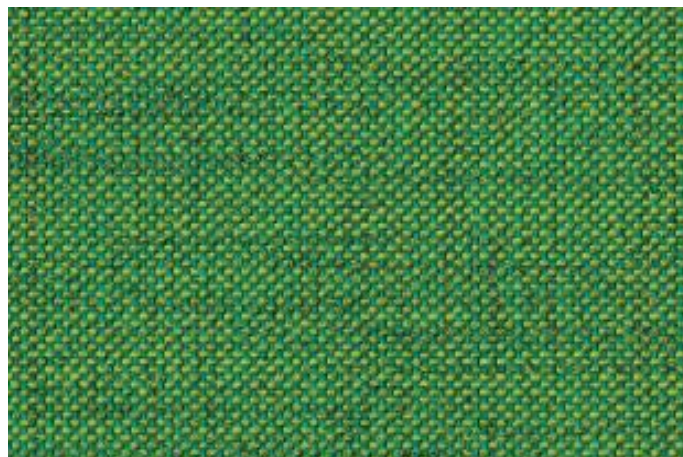
FR Newlife Earth 5N2775 - 113



FR Newlife Earth 5N2775 - 117



FR Newlife Earth 5N2775 - 150



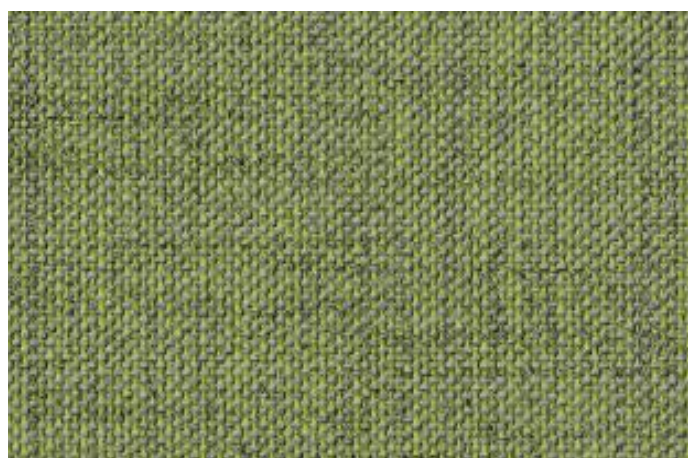
FR Newlife Earth 5N2775 - 151



FR Newlife Earth 5N2775 - 152



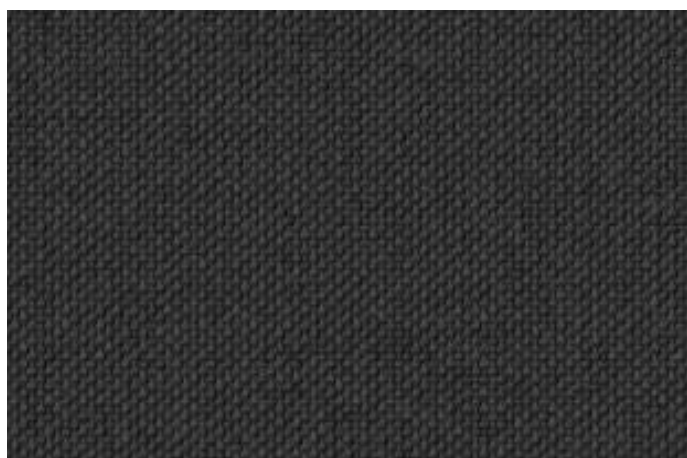
FR Newlife Earth 5N2775 - 153



FR Newlife Earth 5N2775 - 154

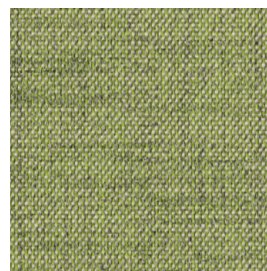


FR Newlife Earth 5N2775 - 155



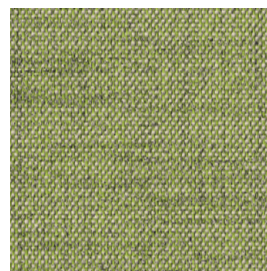
FR Newlife Earth 5N2775 - 275

Artikel: FR NEWLIFE EARTH
Dessin: 5N2775
Material: 100% PES
 (100% PES recycled post-consumer)
Breite: ca. 140 cm
Gewicht: ca. 399 g/m²
Rapport: uni



Scheuertouren	DIN EN 14465 Martindale		200.000 Touren
Pilling	DIN EN ISO 12945-2		Note 4
Reibechtheit	DIN EN ISO 105-X12	nass trocken	Note 4-5 Note 4-5
Hypochloritbleichechtheit	DIN EN 20105-N01		Note 4-5
Speichelechtheit	DIN 53160-1		Note 4-5
Lichtechtheit (Blaumaßstab)	DIN EN ISO 105-B02		Note 6
Weiterreißfestigkeit - Flügel	DIN EN ISO 13937-3	Kettrichtung Schussrichtung	168 N 169 N
Zugfestigkeit	DIN EN ISO 13934-1	Kettrichtung Schussrichtung	1963,13 N 2156,08 N
Nahtschiebewiderstand	DIN EN ISO 13936-2	Kettrichtung Schussrichtung	3,1 mm 2,4 mm
Akustikklasse Akustikwert α w:	ISO 11654		Note B 0,80
Luftdurchlässigkeit	DIN EN ISO 9237		136,00 mm/Sek.
Wasserdampfdurchgangswiderst.	DIN EN ISO 11092:2014-12 ^A		6,93 m ² /PaW
Lösemittlechtheit	DIN EN ISO 105-X05	Petroleum / Waschbenzin Per- / Tetrachlorethylen	Note 5 Note 5
Desinfektionsmittelbeständigkeit	DIN EN ISO 2812-4 (2008-06) gemäß ISO 4628-1 (2016-01) und ISO 4628-2 (2016-01)		bestanden
Meerwasserechtheit	DIN EN ISO 105-E02		Note 5
Chlorwasserechtheit	DIN EN ISO 105-E03		Note 4-5
Brandklasse B1	DIN 4102-1		bestanden
Zigarettentest	DIN EN 1021-1		bestanden
Brandtest/Butangas	DIN EN 1021-2		bestanden
Brennprüfung (Holzscheiterhaufen crib 5) BS 5852-source 5			bestanden
IMO 0493 2022	U.S.C.G. 164.111/EC0493 U.S.C.G. 164.144/EC0493 U.S.C.G. 164.142/EC0493	Part-7 Part-8 Part-9	Deko Möbel Bettüberwurf

Artikel: FR NEWLIFE EARTH
Dessin: 5N2775
Material: 100% PES
 (100% PES recycled post-consumer)
Breite: ca. 140 cm
Gewicht: ca. 399 g/m²
Rapport: uni



Waschschrumpf	30° Celsius	Kettrichtung	-1,0 %
	60° Celsius	Schussrichtung	-1,0 %
		Kettrichtung	-1,0 %
		Schussrichtung	-2,0 %
Reinigungsempfehlung			
Legende Textilkennzeichnung	PES Polyester		